

LESION REFERENCE CHART FOR DIAGNOSIS

CLAW CAPSULE (HORN) LESIONS

Haemorrhage

Blood stained horn, indicating damage to blood vessels underlying the horn.
Occasionally free flowing blood, trapped between two layers of horn.
Horn beneath is intact (no soft tissue exposed – this would be an ulcer)



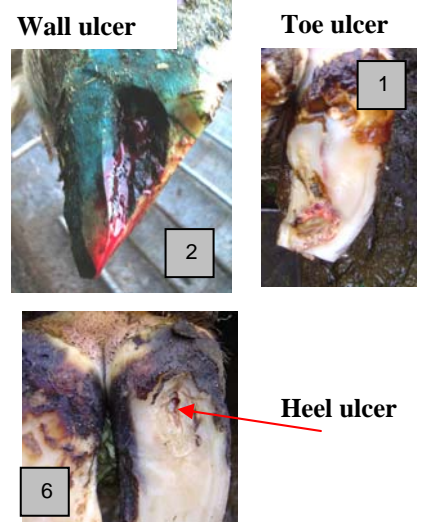
Sole ulcer

Incomplete horn cover exposing soft tissues at the typical “sole ulcer site”



Other ulcers

Incomplete horn cover exposing soft tissues at any other site – eg heel, wall or toe



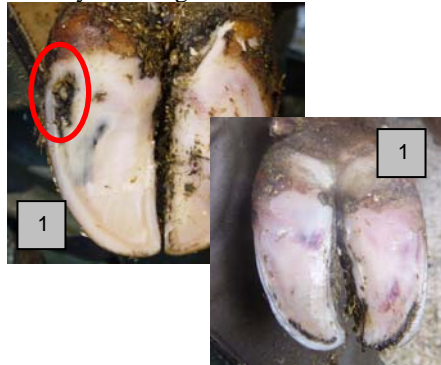
Rotten toe

(pedal bone necrosis)
Cavity in toe of claw, usually with foul smell. Infection has entered claw at toe and reached the bone



White line separation

Physical separation of horn at the white line. Often white line appears black due to entry of foreign material



White line abscess

Abscess formation due to infection tracking along white line separation. In the illustration, the track of infection has been opened up, and pus drained.



Heel erosion

Loss of heel horn – pitting, clefts or extensive horn loss



Wall fissure

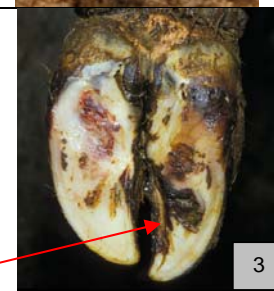
Crack in the inner or outer wall of the claw, either horizontal, or vertical (sandcrack)



Under-run horn

A “flap” of horn with a cavity beneath, formed as a result of disturbance in horn growth or horn quality

Cavity revealed when a flap of horn was trimmed away







Overgrown claw

Excess net horn growth, resulting in a misshapen claw



Lesions in red are most likely to be painful

SKIN AND INTERDIGITAL SPACE		
<p>Digital dermatitis (DD) Inflammation of the skin, typically just above the heel, but may be found at other sites, eg occasionally in the interdigital space. Caused by infection by a group of organisms called “spirochaetes”. Many stages and forms of this condition are seen – see pictures</p>	 <p>Mild DD</p>  <p>Scabbed DD</p>	
 <p>Granulomatous DD</p>	 <p>Hairy wart DD</p>  <p>Severe DD</p>	
<p>Interdigital dermatitis Mild, surface inflammation of skin between the claws, similar to scald in sheep, caused by organisms different from the “spirochaetes” that cause digital dermatitis. If there is any sign of pain, the condition is likely to be digital dermatitis in the interdigital space</p>	 <p>Interdigital growth Hard tissue growth protruding into the interdigital space. Also known as “tyloma”</p> 	
<p>Foul in the foot Fissure /cracked skin between claws with characteristic odour resulting from dead tissue.</p> 	<p>Superfoul Fissure in skin with characteristic odour, and extensive necrotic (dead) tissue. Extreme with sudden onset. Likely to occur in epidemics.</p> 	
OTHER LESIONS		
<p>Foreign body penetration Penetration of sole or white line by stone/thorn etc</p>	<p>Deep sepsis Infection entering the foot has reached the deep structures eg tendons and joint</p>  	<p>Hock damage – mild hair loss or more severe ulcers, wounds swellings.</p> 

Lesions in red are most likely to be painful